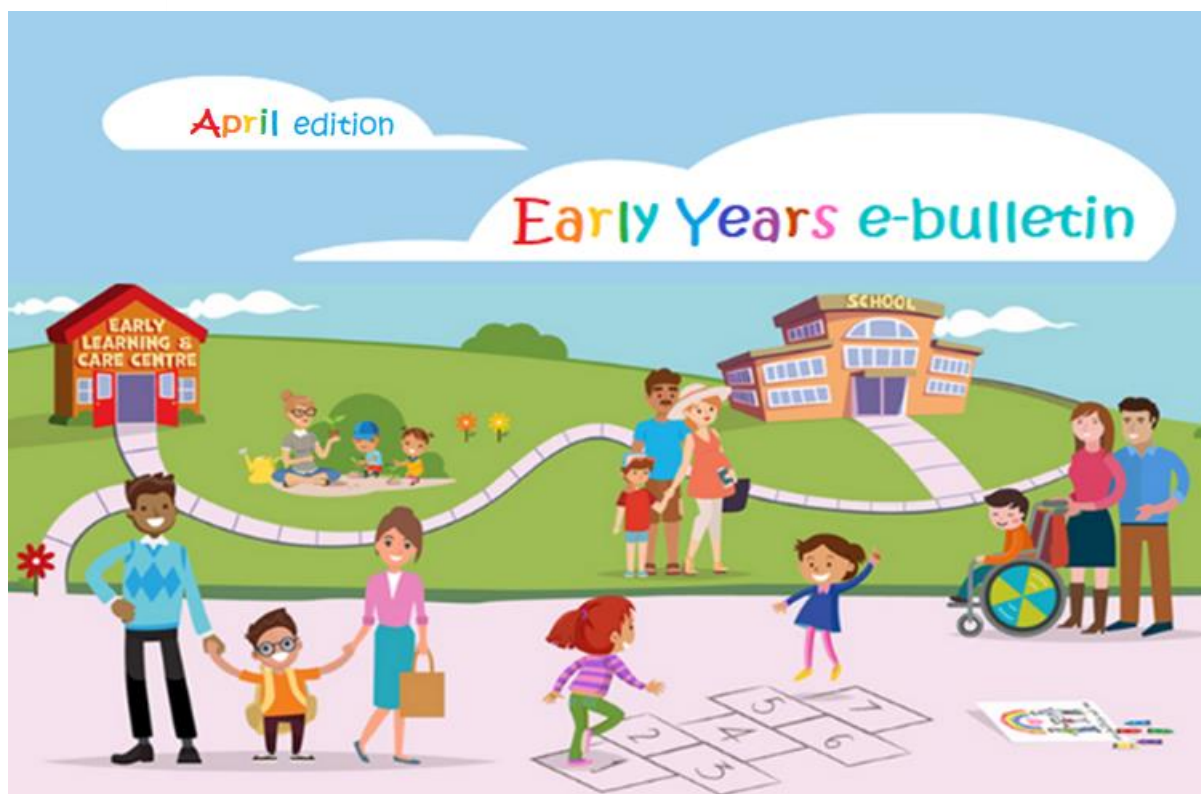


E-Bulletin April Edition



Welcome to your Early Years e-Bulletin

I am very pleased to share a range of updates with you in the April e-bulletin.

I am particularly pleased to share an update on the Nurturing Skills Learner Fund 2025/2026, which is now open for applications until 1 May.

The Fund, which began last year, will cover up to 90% of course fees on QAB-approved qualifications at levels 7 and 8 on the National Framework of Qualifications.



Under the 2025/2026 Fund, a new cohort of early years educators - approximately 350 in total - will be supported to undertake these approved early learning and care qualifications while they continue to work within the early learning and care sector.



E-Bulletin April Edition

This Nurturing Skills Learner Fund is aiming to help meet the Government objective of achieving a graduate-led workforce in early learning and care services by 2028.

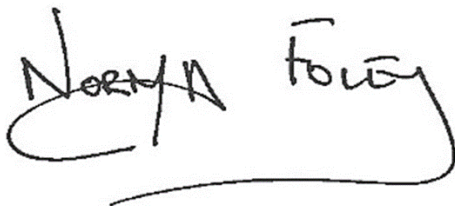
There are also a number of important initiatives and events in the coming month.

In the coming weeks, it will be my pleasure to launch the Little Library Initiative 2025 with Jerry Buttimer, T.D., Minister of State at the Department of Rural and Community Development. This annual initiative aims to support children, starting primary school in September, with this important transition and to encourage them and their families to develop a love of reading. Since this initiative was first introduced, tens of thousands of children and their families have joined their local library.

This month, I will also have the pleasure of hosting the Literacy, Numeracy and Digital Literacy Forum 2025, with Helen McIntee, T.D., Minister for Education. This is the first forum to be held since the publication of Ireland's Literacy, Numeracy and Digital Literacy Strategy 2024-2033: Every Learner from Birth to Young Adulthood and supporting five-year implementation plan in May 2024.

Important preparations are also underway for Nurturing the journey: Exploring Aistear, the Early Childhood Curriculum Framework Conference which will be held on 24 May in the Dublin Royal Convention Centre. This Conference will explore the key changes, messages and principles underpinning the revised curriculum framework. I hope many of you will get the opportunity to attend.

Best wishes,



Norma Foley TD

Minister for Children, Disability and Equality





Core Funding Partner Services Fee Increase Assessment & Financial Reporting Requirements

A. Core Funding Fee Increase Assessment Process

In August 2024, the Fee Increase Assessment process opened, whereby Core Funding Partner Services who were charging fees below the county average were eligible to apply to increase their fees.

This process was introduced to ensure that services who have fees which may not be sustainable are given the opportunity to apply for a fee increase.

This process closed for applications on 29 November 2024.

The Department received a total of 1,146 applications. To date, 849 providers have been approved for a fee increase and 293 have not. 111 providers have appealed the decision and 76 have requested a review.

B. Core Funding Financial Reporting Requirements – Programme Year 2

Core Funding Partner Services have until 18 April 2025 to submit their Income and Expenditure Template for programme year 2. There is some additional information available on the Hive, under the Core Funding Reporting Year 2 (2023/2024) tab, including the updated list of nominal codes, an FAQ and a Guidance Note for Core Funding Financial Reporting requirements.

The online submission portal, CFCRRS.ie, is now open. A sample Income and Expenditure template is available to download from the Hive.

E-Bulletin April Edition



Building Blocks Extension Grant Scheme Update

The purpose of the Building Blocks Extension Grant Scheme is to deliver additional capacity in the sector by supporting existing private or community early learning and care and school-age childcare services to undertake physical extensions to existing premises, or for community services to purchase or construct new premises. Up to €25m in capital funding has been made available this year under the Scheme.

The primary focus of the scheme is to increase capacity in the one-three-year-old, pre-ECCE age range for full day care. The Scheme is open to Core Funding Partner Services.

The scheme was launched on 4 November 2024 and closed for applications on 30 January 2025, following an extension to accommodate some services affected by power outages following Storm Eowyn. All eligible applications are currently being appraised and Minister Foley hopes to announce the successful applications in April.

E-Bulletin April Edition



Rialtas na hÉireann
Government of Ireland



Arna chomhchistiú ag
an Aontas Eorpach

Co-Funded by the
European Union

Nurturing Skills Learner Fund (NSLF) is now open to applicants for the academic year 2025/2026 and the application process will close on 1 May 2025

Nurturing Skills Learner Fund (NSLF)

The Nurturing Skills Learner Fund (NSLF) 2025/2026 will support early years educators to undertake approved early learning and care qualifications at levels 7 and 8 on the National Framework of Qualifications, while they continue to work within the early learning and care sector with a service that has a Core Funding contract with the Department. The NSLF aims to help meet the Government objective of achieving a graduate-led workforce in early learning and care services by 2028.

Applications for NSLF for Academic Year 2025/2026

The application process for NSLF for the academic year 2025/2026, is open for applications since 11 March 2025.

Application Process and Timelines

New applicants should email Pobal, at NSLF@pobal.ie to request a link to the NSLF Student Portal in order to create an account and upload employment details and complete the new application process.

Applicants who applied for NSLF for the academic year 2024/2025 and were unsuccessful should make a new application for the academic year 2025/2026 through the NSLF Student Portal. Applicants should login to their NSLF account, upload employment details and complete the new application process.

Applicants will be required to complete a number of pre-requisite tasks prior to completing the application process.

E-Bulletin April Edition

The application process will close on 1 May 2025. Successful applicants for NSLF 2025/2026 will be notified by Pobal in mid to end May.

Continuing Students

These are existing students who successfully received NSLF funding for Academic Year 2024/2025 and wish to continue to receive funding for NSLF for Academic Year 2025/2026.

Pobal will contact continuing students directly in early summer asking individuals to verify their continuing eligibility for NSLF. Once eligibility is confirmed, a new Letter of Conditional Funding will issue to the student for the academic year 2025/2026.



Rules and conditions for academic year 2025/2026

Details of the NSLF rules and conditions can be viewed on the Nurturing Skills Learner Fund [website](#). Please read carefully prior to completing the application process.

E-Bulletin April Edition

Eligibility

Those wishing to make an application must meet the following eligibility criteria for the NSLF:

- Be working with children in a Tusla-registered Early Learning and Care (ELC) or School-Age Childcare (SAC) service,
- The service in which the applicant is working in, must have a current signed Core Funding contract with the Department.
- Applicants must have worked within an ELC or SAC service for the six months prior to their application.
- Applicants must have a current application/offer for 2025/26 entry to a Level 7/8 Degree course approved by the Qualification Advisory Board (QAB) that is eligible for NSLF.
- Be a new entrant to an Approved Course for the academic year commencing 2025/2026 (autumn 2025)
- Not be an early years educator or SAC practitioner currently undertaking the completion of an Approved Course or an equivalent degree; and
- Not be an early years educator or SAC practitioner who has already completed an Approved Course or equivalent degree.





E-Bulletin April Edition

For clarity purposes, at time of application an applicant must not hold (or be undertaking) an Approved Course at level 7 or level 8 in Early Learning and Care.

Selection Criteria

Where the demand for funding is greater than the available budget, the selection of successful applicants is based on the following criteria as set out in the Scheme rules:

1. The number of graduates in the applicant's service, with priority for applicants from services with no graduates.
2. Priority index (Equal Start Index), with priority for applicants from services supporting the most disadvantaged children
3. The role of the applicant in a service, with priority for those in lead educator or manager roles.
4. If, after the above prioritisation has been applied and not been decisive, random selection was applied.

NSLF has secured funding under the Irish Government's Employment, Inclusion Skills and Training (EIST) scheme and the European Commission's European Social Fund + (ESF+).



E-Bulletin April Edition

New online application process for Qualification Recognition

The Department is introducing a new online application process for those seeking to have their qualification recognised as meeting regulatory or contractual requirements to work with children in the sector.

Under the Child Care Act 1991 (Early Years Services) Regulations 2016, all staff working directly with children in a pre-school service must hold at least a Level 5 major award in early childhood care and education on the National Framework of Qualifications (NFQ), or a qualification that the Minister for Children, Disability and Equality has deemed to be equivalent.

From the 14 April 2025, an online application will replace the current application process. This online application process will ensure applicants can upload their application documents with user-friendly, efficient, and accessible digital forms. This system will reduce the waiting times for those waiting for a letter of qualification recognition to work in early learning and care services.





E-Bulletin April Edition

There will be three options for individuals to apply for qualification recognition:

1. Those who have completed their early learning and care qualification that does not appear on the Department's list of recognised qualification.
2. Those currently studying a course on the Department's list of recognised qualifications.
3. Those who have an unfinished qualification on the Department's list of recognised qualifications.

Once the Department has received an application, applicants will be contacted within five to seven working days and a unique reference number will be issued. This reference number should be used by the applicant when making any queries regarding their qualification.

Please note, due to GDPR, the Department can only discuss applications with the individual applicant and not a third party.

This electronic form will be available: [here](#).

For any queries, please email EYQualifications@equality.gov.ie


Auto Pension Enrolment

Auto-enrolment – What is it?

Auto-enrolment is a new retirement savings system for employees that will be introduced on 30 September 2025.

People who do not have a pension scheme, earn more than €20,000 per year and are aged between 23 and 60 will be automatically enrolled into the new pension scheme. Taking part in this scheme means employees will have extra money when they retire and won't have to rely on the state pension alone.

The Department of Social Protection is responsible for the introduction of the scheme and they have prepared a range of resources for both employers and employees on [gov.ie - Auto-enrolment \(www.gov.ie\)](http://gov.ie - Auto-enrolment (www.gov.ie))



E-Bulletin April Edition

Auto-enrolment pension – information for employers

The National Automatic Enrolment Retirement Savings Authority (NAERSA) will administer the scheme. NAERSA will act as caretaker of the scheme, collect employer, employee and State contributions and, using Revenue data figure out who is automatically enrolled.

Employees will keep one pension savings pot as they move from job to job – this is known as the ‘pot-follows-member’ approach.

NAERSA will operate an online portal for employees, to manage employee opt-outs, opt-ins, suspension of contributions and re-enrolment. It will also operate an online portal for employers, to facilitate the payment and monitoring of contributions.

All of this will mean that as an employer you will have minimal administrative work in relation to auto-enrolment. <https://www.gov.ie/en/publication/12d1c-auto-enrolment-retirement-savings-system-for-employers/#how-will-auto-enrolment-work>



Auto-enrolment rules

NAERSA will identify whether employees are eligible for auto-enrolment, so employers will not need to determine whether their employees meet the eligibility criteria.



E-Bulletin April Edition

Employees who meet these conditions will be automatically enrolled:

- Staff aged between 23 and 60.
- Staff not currently part of a pension plan.
- Staff who earn €20,000 or more per year.
- Those earning below €20,000 will not be auto enrolled and will have to opt into the scheme.
- Auto-enrolment is new employment right, employers have responsibility to ensure that all eligible employees have access to the scheme.

Employer Auto-enrolment Obligations

The new scheme will exist alongside the current occupational pensions system. This means that any existing pension scheme will run in parallel to auto-enrolment. Any employees that have a record via payroll of either employee contributions and/or employer contributions will not be enrolled in the scheme.

The contributions to the new scheme will be fixed at the set rate of employee annual salary. Employer's will match employee contributions, and the Government will contribute an additional amount. You cannot pay more or less than the set rate.


Set rate employer contributions will start at 1.5% of gross pay.

- In year 4 they will increase to 3%.
- In year 7 they will increase to 4.5%.
- In year 10 they will increase to the maximum rate of 6%.

For further information on auto-enrolment please see the links below:

- [gov.ie - Auto-enrolment \(www.gov.ie\)](http://www.gov.ie)
- [Auto-enrolment explained - YouTube](#)
- [gov.ie - Auto-enrolment: Your questions answered \(www.gov.ie\)](http://www.gov.ie)

Keep up to date on the latest developments on auto-enrolment including information on public webinars at [gov.ie - Auto-enrolment latest news and events](#)



E-Bulletin April Edition

2025 Re-registration of Services

As referred to in the section below from Tusla, over 4,000 services are required to complete the re-registration process later this year. In order to ensure a smooth re-registration, the Department would encourage providers to follow the steps outlined by Tusla at their earliest possible convenience.

This will also ensure that there are no delays or issues relating to payments under any of the Department's schemes, all of which require a valid Tusla registration as part of the funding agreement. It is important to note that the Department cannot pay any scheme funding for any unregistered period with Tusla.

Aistear: The journey continues

The graphic below outlines the supports that will be available to you all during the familiarisation period of the updated Aistear.



E-Bulletin April Edition



Little Library 2025 Launch

My Little Library is launching in the next few weeks.

The First 5 My Little Library Initiative is an innovative way to introduce young children to the wonderful world of books. Children aged four to five years will receive invitations through their ELC service to become

members of their local library and collect a bag of books in English or Irish before they started school. Parents will also receive the invitations alongside the launch date from their ELC service through a WhatsApp message.

Libraries encourage children to pick up a book bag and open their minds and imaginations into a wonderful world full of reading and learning. My Little Library aims not only to encourage children and families develop a love of reading, but to ease their transition to junior infants, and to encourage them to become members of their local library so that they can enjoy a lifetime of access to books. The numbers of young children joining the library is higher than ever before. Libraries Ireland has expressed thanks for the support from early learning and care services with the initiative.

Dear Children,

We know that you are starting school in September. To celebrate this, the Minister for Children has asked us to make a gift of a My Little Library Bag just for you.

The stories in the books are about starting school, being happy in yourself, or making friends, and the bags are waiting for you in a very special place: your local library.

A library card and a special Little Library card wallet is also included with every bag. We hope that you will join the library and come and borrow lots more books whenever you can.

You can also come and hang out and read some books in the library with your parents or guardians if you have some free time.

We hope that this gift of books will lead you to a lifelong link with your library and a love of books and reading.

We look forward to meeting you, and we hope you enjoy the books,

Your local library



A Leanaí, a chairde,

Tá a fhios againn go bhfuil sibh ag tosú ar scoil i mí Mheán Fómhair.

D'fann an Aire Leanaí orainn málá Mo Leabharlann Bheag a bhronnadh ort.

Baineann na scéalta sna leabhair le tosú ar scoil, a bheith sísta ionat féin, agus cairde a dhéanamh, agus tá na málá ag fanacht leat in áit an-speisialta do leabharlann áitiúil.

Tá cárta leabharlann agus spárán speisialta cárta An Leabharlann Bheag san áireamh freisin le gach málá. Tá súil againn go nglacfaid tú ballraíocht sa leabharlann agus go dtiocfaid tú leasach chugainn le leabhair a fhaic ar leasacht uainn, am ar bith a oireann duit.

Cromh maith leis sin, is féidir leat teacht agus crochadh timpeall agus nórinn leabhair a léamh sa leabharlann le do thuismitheoir, nó caomhnóir má tá nórinn ama saor agat.

Tá súil againn go dtabharfaid an féirín beag seo nasc fadaí duit le do leabharlann agus grá do leabhair agus don léitheoireacht.

Táimid ag mbeirfidh tú taitneamh as na leabhair.

Do leabharlann áitiúil



Dear Parent/Guardian,

We know that your child is starting school in September. To celebrate this, and to help them navigate this new experience, the Minister for Children has asked us to make a gift of a My Little Library Bag just for them.

The stories in the books are about starting school, being happy in yourself, or making friends, and the bags are waiting for them in a very special place: your local library.

A library card and a special Little Library card wallet is also included with every bag, and we hope that your little one will make use of it. To help them join the library, parents will be asked to sign a consent form and to show valid ID.

Library membership is free for everyone. You may wish to renew a library card for yourself or other children in your family, or join for the first time. Your ID will also be necessary in this case.

We hope that this small gift will lead your child to a lifelong love of books and reading, a love you will get to share with them.

We look forward to meeting you, and we hope you all enjoy the books,

Your local library



A Thuismitheoir/Chaomhnóir, a chara,

Tá a fhios againn go bhfuil do leanaí ag tosú ar scoil i mí Mheán Fómhair.

Chun é seo a chéilúradh, agus chun cabhrú leo a mbealach a dhéanamh tríd an spéireas nua seo, d'fann an Aire Leanaí orainn málá Mo Leabharlann Bheag a bhronnadh orthu. Baineann na scéalta sna leabhair le tosú ar scoil, a bheith sísta ionat féin, agus cairde a dhéanamh, agus tá na málá ag fanacht leo in áit an-speisialta do leabharlann áitiúil.

Tá cárta leabharlann agus spárán speisialta cárta An Leabharlann Bheag san áireamh freisin le gach málá, agus tá súil againn go mbeirfidh do leanaí úsáid as. Chun cabhrú leo ballraíocht a ghlacadh sa leabharlann, tairfear ar thuismitheoirí foirm tollthe a shíniú agus cárta aitheantais balla a thaispeáint.

Tá ballraíocht leabharlann saor in aisce do dháid. B'fhéidir gur mhaith leat cárta leabharlann a athnuachtan duit féin nó do leanaí eile i do theaghlach, nó ballraíocht a ghlacadh den chéad uair. Beidh do chúirt aitheantais nactanach sa chás seo freisin.

Tá súil againn go dtabharfaid an féirín beag seo spéis fad saoi do dleatháir sna leabhair agus sa léitheoireacht, spéis a mbeidh tú in ann a nórinn leat.

Táimid ag mbeirfidh tú taitneamh as na leabhair.

Do leabharlann áitiúil



E-Bulletin April Edition



UNESCO have just launched the Japan Prize on Education for Sustainable Development

Funded by the Government of Japan, the Prize rewards exceptional projects and programmes undertaken in the field of Education for Sustainable Development. It consists of three awards of **USD 50,000** for each recipient.

Further information, including a user guide and answers to Frequently Asked Questions, can be found on the Prize website: <https://en.unesco.org/prize-esd>.

Each UNESCO member state can submit up to three nominations. Details of the National Selection process will be published on the [ESD to 2030](#) webpage in the coming weeks.”



E-Bulletin April Edition

Social Media Presence has expanded onto Instagram

The Early Learning and Care and School-Age Childcare Division wants to ensure that we can reach as wide an audience as possible with updates on progress being made with the implementation of the First 5 Strategy for Babies, Young Children and their Families and with updates on the positive impacts of the work of the Division.

To this end, we have recently added Instagram as an additional platform to our existing social media presence on X (formerly Twitter).

You can follow us on Instagram @first5ireland for updates.

first5ireland



First 5 Ireland

3

posts

19

followers

12

following

The official account of First 5, a whole-of-government strategy for babies, young children and their families, led by @dcediy

www.gov.ie/en/campaigns/5ab17-childcare/?refer...

Professional dashboard

New tools are now available.

Edit profile

Share profile



Department of Education Inspectorate Update for Early Learning and Care Settings April 2025



An Roinn Oideachais
Department of Education

New Insights Webinar Series: Nurturing English as an Additional Language



Since 2020, the Department of Education (DE) Inspectorate has published a series of online webinars entitled *Insights: Quality in Early Years Education*. The latest series *Nurturing English as an Additional Language* was published recently.

Taking into consideration the number of children in Ireland whose native language is neither English nor Irish, it is clear that this is a significant theme for educators. During inspections, inspectors, managers and early years educators often discuss how best to support children who are learning English as an additional language.

This series aims to provide research-based practical information on this theme. The series also highlights the practices adopted by early years educators in high-quality early learning and care settings to support children who are learning English as an additional language.

These include building positive relationships with the children and their families, supporting the child's

sense of identity and belonging including by valuing the child's home language, supporting children's linguistic learning through meaningful interactions and a play-based pedagogy, using visual supports for communication, and supporting the child's transition to school.



We hope that you enjoy this series and find it beneficial in supporting your work with children who are learning English as an additional language.



E-Bulletin April Edition

The webinars are now available at:

 [gov.ie - Insights – Nurturing English as an additional language](#)

 [gov.ie - Léargas – Béarla a chothú mar theanga bhreise](#)





government supporting communities

We are delighted to be able to bring you the latest updates from Pobal Early Years and keep you updated on what's happening. See below for all the latest highlights.

1. Payment dates

April 2025 Payments

11
April

- Access and Inclusion Model (AIM) L7
- National Childcare Scheme (NCS)

18
April

- Access and Inclusion Model (AIM) L7
- National Childcare Scheme (NCS)
- Community Childcare Subvention Programme (CCSP)

25
April

- Access and Inclusion Model (AIM) L7
- National Childcare Scheme (NCS)

May 2025 Payments

2
May

- Access and Inclusion Model (AIM) L7
- National Childcare Scheme (NCS)
- Community Childcare Subvention Programme (CCSP)
- Core Funding (including Equal Start)

9
May

- Access and Inclusion Model (AIM) L7
- National Childcare Scheme (NCS)
- Early Childhood Care and Education (ECCE) (including AIM L1)

16
May

- Access and Inclusion Model (AIM) L7
- National Childcare Scheme (NCS)
- Community Childcare Subvention Programme (CCSP)

23
May

- Access and Inclusion Model (AIM) L7
- National Childcare Scheme (NCS)

30
May

- Access and Inclusion Model (AIM) L7
- National Childcare Scheme (NCS)
- Community Childcare Subvention Programme (CCSP)
- Core Funding (including Equal Start)

June 2025 Payments

6
June

- Access and Inclusion Model (AIM) L7
- National Childcare Scheme (NCS)
- Early Childhood Care and Education (ECCE) (including AIM L1)

13
June

- Access and Inclusion Model (AIM) L7
- National Childcare Scheme (NCS)
- Community Childcare Subvention Programme (CCSP)

20
June

- Access and Inclusion Model (AIM) L7
- National Childcare Scheme (NCS)

27
June

- Access and Inclusion Model (AIM) L7
- National Childcare Scheme (NCS)
- Community Childcare Subvention Programme (CCSP)
- Core Funding (including Equal Start)

2. Check your contact details

From time to time, the Early Years Provider Centre (EYPC) may need to contact your service by phone for urgent matters. To make sure we have your service's correct contact details, check your details on the Early Years Hive. If your phone number or email address needs updating, please let us know.



How to check contact details of your service:

1. Go to the [Manage Service Providers](#) page on your Early Years Hive, under the My Account menu.
2. You will see the services associated with your organisation (that is, multi-service organisations will see multiple services listed here). Click on your service's name.
3. Check the phone number and email address listed in the General section.
4. If information needs updating, raise a [Request](#) using the User Account Management category, outlining what needs to be changed.

Once we get your request, we'll update your information as soon as possible.

Primary Authorised User (PAU)

Now might be a good time to review your service's user roles and its Primary Authorised User (PAU) on the [Manage User Roles](#) page.

- You can add new users by clicking the Create New User button, and
- You can remove users by clicking the yellow arrow beside that user's name and selecting Remove.

To set up a new PAU, follow the steps [here](#) in the Help and Support section of the Early Years Hive.

3. National Childcare Scheme (NCS)

Confirming claims during Easter break

As the Easter break approaches, we would like to remind providers that all claims must be checked by parents and confirmed on the system, if correct. As a provider, you will not receive payment for a child's attendance until the claim is confirmed.



Parents may wish to claim additional hours during the Easter break. If so, once you have completed the registration, the Scheme Administrator will notify the parent to check that the information entered is correct. The parent must then confirm the registration on their portal to complete the process and allow the subsidy payment to begin. If the parent fails to do so, the payment will not be issued to your service.

As a reminder, you can check if a registration is confirmed through the Early Years Hive by clicking the 'Programmes' tab and selecting 'Child Registrations'. On the right-hand side, you will see 'all claims confirmed by Parent' – if the selection says 'No' this means that the child has at least one unconfirmed claim.

Where claims are unconfirmed, it may be beneficial to engage directly with the parent to rectify.

If you require any guidance checking registration status, you can contact the Early Years Provider Centre (EYPC). The EYPC is open Monday to Friday, 9am-5pm and may be contacted on (01) 511 7222. Alternatively, it may be quicker to submit a request on the Early Years Hive by logging in and going to the Requests page.

Parents seeking support in relation to confirming claims can access our FAQs via www.ncs.gov.ie or by calling the Parent Support Centre on (01) 906 8530.

E-Bulletin April Edition

4. Annual Early Years Sector Profile Survey 2024/25

The new Annual Early Years Sector Profile Survey is due to launch in early May.

Services have three weeks to complete the survey once it is opened.



While we hope all services will complete the survey, please remember it's mandatory for all Core Funding Partner Services to complete within the open window.

Services intending to become a Core Funding Partner Service in the future must complete the survey before submitting their Core Funding application.

Changes to the survey this year:

- The survey has been improved to pre-populate staff sections with the appropriate staff members from the Service Profile.
- Data from the survey is published through interactive easy to use dashboards on the new [Early Learning and Childcare Data website](#).

The opening and closing date of the survey will be communicated on the [announcements page](#) of the Early Years Hive in the coming weeks.

Keep an eye out for details over the coming weeks.



Forbairt Cáilíocht
Luathbhlianta Náisiúnta
National Early Years
Quality Development

Quality Development Service (QDS)

What areas of practice would you like to strengthen for children in your setting? The Quality Development Service offers practice advice and mentoring that focuses on children's learning and development and is tailored to your setting.

If you are interested in availing of practice advice and mentoring from an Early Years Specialist, you can apply directly through the Early Years Hive.

Find out more about Quality Development Service, the services it offers, and how to apply [here](#).



Better Start Early Years Learning and Development

Learning and Development Lámh 'Revise Your Signs of Module One' Online workshops

- These sessions are suitable for anyone who has completed Lámh Module One and wants to revise the 100 Module One Lámh Signs in a Live Session via Zoom with a Lámh Tutor.
- Participants must have completed the Lámh Module One course and send their Certification of Completion to: lamhreviseyoursigns@gmail.com when securing a place at this session.



What does the course consist of?

- Two hours of 'Revise Your Signs' session with a Lámh Tutor - online via Zoom.
- The 100 Signs of the Lámh Module One course will be demonstrated
- Watch out for upcoming events on the Better Start website and Facebook.

Access and Inclusion Model (AIM)

At this time of the year, we're thinking about the children who are moving onto to school in September as well as those who are preparing to enrol in early learning and care service or on the ECCE programme for the first time.



We have a fantastic suite of resources to support parents, early years educators and most importantly the children prepare for these exciting transitions.

Check out some interesting materials available in both Irish and English [here!](#)

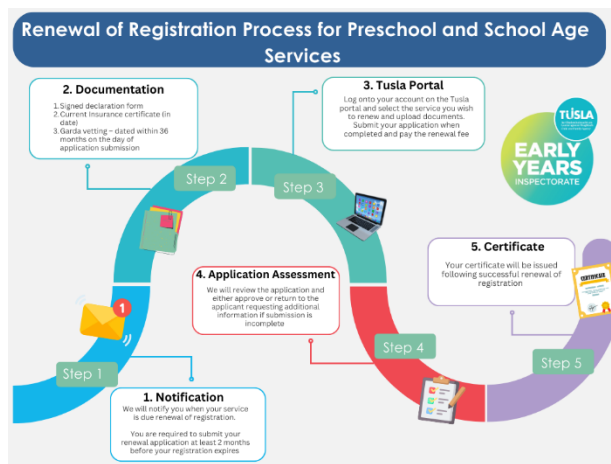
For settings with children attending over Easter, don't forget to apply for AIM Non-Term support on the Early Years Hive.

Check out the guide on submitting AIM Non-Term applications for more information [here!](#)

EARLY YEARS INSPECTORATE

Registration Renewal

2025 Registration Renewal - January 2025



The 2025 Registration Renewal Cycle began in March 2025 and will cover over 4,000 Pre-School and School-Age Services. Early Years Services are required to renew their registration every three years. To prepare, please check your service's registration status using your individual Tusla number for each of your services and update any required documentation in advance.

You can find your registration date on your current certificate or via the registers:

- **Pre-School Services:** [Link](#)
- **School-Age Services:** [Link](#)

Required documents:

1. Signed declaration form.
2. Current, valid insurance certificate.
3. Garda vetting for the Registered Provider and Person in Charge (PIC), dated within 36 months of submission. For corporate bodies, Garda vetting is also needed for all directors who have access to children.



E-Bulletin April Edition

The portal will be available to you six months in advance of your expiration date. Your completed application is required at least two months before your expiration. Services who fail to renew before the expiration of their current registration will be removed from the register of services.

For additional information, visit this [link](#).

Garda Vetting

From 1 February 2025, Tusla commenced providing the Garda Vetting Application Service for anyone who is a Registered Provider of an early years' service (under part VIIA of the Child Care Act 1991, as amended) or anyone who is planning to submit an application to become a Registered Provider. This includes:

- Registered Providers of pre-school services
- Registered Providers of school age services
- Childminders
- Head of Boards of management who carry out quality assurance visits and other persons assigned to carry out quality assurance visits on behalf of the Head.

You can find more information on the new [Garda Vetting section of our website](#)



Childminding

Childminding Services



The Early Years Inspectorate's system for processing applications for the registration of childminders is now well established.

We have published [a range of resources](#) to support childminders and prospective childminders with the regulatory process. Resources include bite-size videos and guidance documents.

Guidance Documents and Videos	
Childminding Applications	
Guidance Documents	Supporting Videos
<ul style="list-style-type: none">▪ Guide to the Tusla portal for Childminders▪ Guide to Registration application for Childminders	<ul style="list-style-type: none">▪ Setting up an account on the Tusla Portal▪ Getting started with your childminding application▪ Completing the online application on the Tusla Portal
Pre-Registration Assessment	
Guidance Documents	Supporting Videos
<ul style="list-style-type: none">▪ Guide to Pre-Registration Assessments for Childminders▪ Corrective Action Process for Childminding Services.▪ Safe sleep for babies and children Guidance for Childminders▪ A Guide to Assessment Findings Review for Childminders	<ul style="list-style-type: none">▪ Pre-Registration Assessment▪ Childminding Home Visit▪ Corrective Action Process▪ Assessment Findings Review Process

E-Bulletin April Edition

More than 20 childminders have now successfully registered for the first time under the new regulations. We have established a feedback survey to enable childminders to tell us how they found the process and the ICT system supporting it.

If you have questions about childminding regulations, our [Childminder Frequently Asked Questions](#) page can provide further assistance.

If you cannot find the answer to your question, you can contact our childminding helpline.

Childminding Advice & Information

For information about the regulation of childminding, please have a look at the extensive [Childminder Frequently Asked Questions](#) on our website

If you can't find the answer to your question in the FAQs you can contact our Childminding helpline, either via email - cm.registration@tusla.ie or on (061) 440600 (option 9)

